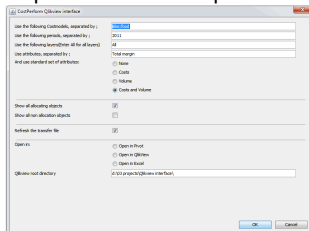


CostPerform & QlikView

Although CostPerform provides a rich set of outputs, many customers use one or more BI tools as part of their overall reporting. CostPerform can always export its results to any BI tool. For QlickView we've made a dedicated interface that allows the user to browse results in QlickView automatically.

How does it work?

The user has to startup the interface script and fill in some parameters.

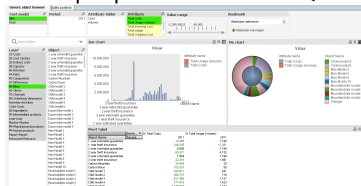


You can enter one or more cost models, one or more periods, one or more layers and one or more attributes. Another option is to filter for allocating and non allocating objects. Then, you have the option to present the results in:

- QlikView
- Excel
- CostPerform Pivot

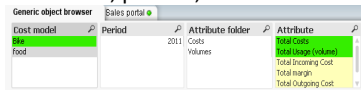
Results in QlikView

The script opens the results in Qlikview.

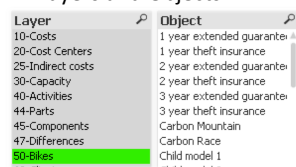


The generic object browser pane allows you to select the following:

- Models, periods, attributes



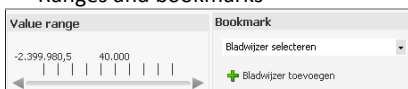
- Layers and Objects



- Search objects

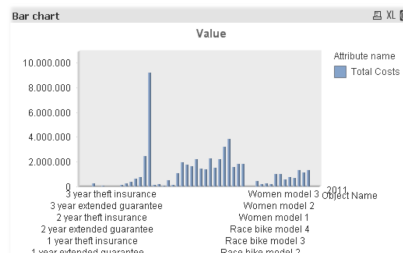


- Ranges and bookmarks

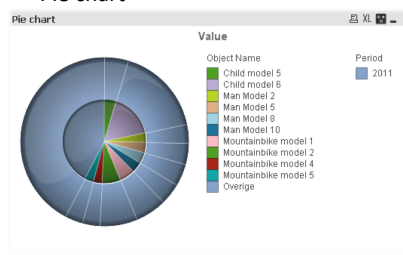


These filter panes allow you to quickly search for the information you want. In the middle of the screen, you'll find 3 result screens.

- Bar chart



- Pie chart



- Pivot table

Pivot table		Attrib...	Total Costs
Object Name	Period		
1 year extended guarantee			2011
1 year theft insurance			10.495
2 year extended guarantee			249.295
2 year theft insurance			8.808
3 year extended guarantee			65.97
3 year theft insurance			7.964
Carbon Mountain			22.216
Carbon Race			29.464
Child model 1			103.557
Child model 2			240.811
Child model 3			368.715
Child model 4			611.468
Child model 5			771.818
Child model 6			2.445.632
			9.170.865

The QlikView template is created as a starting point to change the way you want to analyze your data. Using Qlikview's easy to understand user interface, changing the standard screen to your needs is relatively easy.

Results in Excel

If you want to work with Excel you can let the script write the results of your selection straight to an Excel file. The format of the data is ready for the Excel pivot table function, without having to change the data.

	Item	A	B	C	D	E	F	G	H	I	J	Total	Actual value
1	ike	Pen	Chet	5	1	1	1	1	1	1	1	7	120000
2	ike	Pen	Chet	5	1	1	1	1	1	1	1	7	120000
3	ike	Pen	Chet	5	1	1	1	1	1	1	1	7	120000
4	ike	Pen	Chet	5	1	1	1	1	1	1	1	7	120000
5	ike	Pen	Chet	5	1	1	1	1	1	1	1	7	120000
6	ike	Pen	Chet	5	1	1	1	1	1	1	1	7	120000
7	ike	Pen	Chet	5	1	1	1	1	1	1	1	7	120000
8	ike	Pen	Chet	5	1	1	1	1	1	1	1	7	120000
9	ike	Pen	Chet	5	1	1	1	1	1	1	1	7	120000
10	ike	Pen	Chet	5	1	1	1	1	1	1	1	7	120000
11	ike	Pen	Chet	5	1	1	1	1	1	1	1	7	120000
12	ike	Pen	Chet	5	1	1	1	1	1	1	1	7	120000
13	ike	Pen	Chet	5	1	1	1	1	1	1	1	7	120000
14	ike	Pen	Chet	5	1	1	1	1	1	1	1	7	120000
15	ike	Pen	Chet	5	1	1	1	1	1	1	1	7	120000
16	ike	Pen	Chet	5	1	1	1	1	1	1	1	7	120000
17	ike	Pen	Chet	5	1	1	1	1	1	1	1	7	120000
18	ike	Pen	Chet	5	1	1	1	1	1	1	1	7	120000
19	ike	Pen	Chet	5	1	1	1	1	1	1	1	7	120000
20	ike	Pen	Chet	5	1	1	1	1	1	1	1	7	120000
21	ike	Pen	Chet	5	1	1	1	1	1	1	1	7	120000
22	ike	Pen	Chet	5	1	1	1	1	1	1	1	7	120000
23	ike	Pen	Chet	5	1	1	1	1	1	1	1	7	120000
24	ike	Pen	Chet	5	1	1	1	1	1	1	1	7	120000
25	ike	Pen	Chet	5	1	1	1	1	1	1	1	7	120000
26	ike	Pen	Chet	5	1	1	1	1	1	1	1	7	120000
27	ike	Pen	Chet	5	1	1	1	1	1	1	1	7	120000
28	ike	Pen	Chet	5	1	1	1	1	1	1	1	7	120000
29	ike	Pen	Chet	5	1	1	1	1	1	1	1	7	120000
30	ike	Pen	Chet	5	1	1	1	1	1	1	1	7	120000
31	ike	Pen	Chet	5	1	1	1	1	1	1	1	7	120000
32	ike	Pen	Chet	5	1	1	1	1	1	1	1	7	120000
33	ike	Pen	Chet	5	1	1	1	1	1	1	1	7	120000
34	ike	Pen	Chet	5	1	1	1	1	1	1	1	7	120000
35	ike	Pen	Chet	5	1	1	1	1	1	1	1	7	120000
36	ike	Pen	Chet	5	1	1	1	1	1	1	1	7	120000
37	ike	Pen	Chet	5	1	1	1	1	1	1	1	7	120000
38	ike	Pen	Chet	5	1	1	1	1	1	1	1	7	120000
39	ike	Pen	Chet	5	1	1	1	1	1	1	1	7	120000
40	ike	Pen	Chet	5	1	1	1	1	1	1	1	7	120000
41	ike	Pen	Chet	5	1	1	1	1	1	1	1	7	120000
42	ike	Pen	Chet	5	1	1	1	1	1	1	1	7	120000

Results in CostPerform Pivot

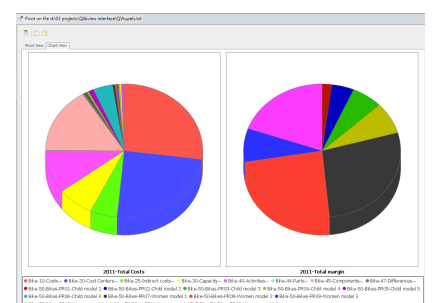
Based on the same dataset the results show in the same Pivot function as you find in the standard CostPerform reporting function.

The Pivot opens with a standard set of row and column attributes, ready for analysis. Of course, the Pivot allows you to change rows and columns and to represent the data in graphs.

Plot on File: d3_0323_q2new-interval/Q2vps.tbl

Print View Chart View
Drag/Filter Fields Here

Attribute name		Period	Attribute name	Total	Total	Total	Total
		Q2 2013		Total	Total	Total	Total
Model	Layer symbol	Object Symbol	Object Name	Total Counts	Total Values	Total ranges	Total Outlines...Total Usage
File	Q2-2013						
		001	W	0	0	0	0
		01	R	13,380,000	13,380,000	0	13,380,000
			Ranges	0	0	0	0
		011114	Bravo pad	40,000	40,000	0	40,000
		011115	Extra Bravo Pad File	40,000	40,000	0	40,000
		011116	Cars	720,000	720,000	0	720,000
		011117	Telephones	20,000	20,000	0	20,000
		011118	Inventory	300,000	300,000	0	300,000
		011112	Motorcycles	40,000,000	40,000,000	0	40,000,000
		011113	Working	5,000,000	5,000,000	0	5,000,000
		011114	Deposition	400,000	400,000	0	400,000
		011115	Legal notes	200,000	200,000	0	200,000
		011116	Specific case notes	300	300	0	300
Q2-2013 Content		CC0-1	Procurement PFB	717,768.8	717,768.8	0	717,768.8
		CC0-2	Procurement MRP	19,278.8	19,278.8	0	19,278.8
		CC0-3	Procurement MRP	300,000	300,000	0	300,000
		CC0-4	Procurement Order	0	0	0	0
		CC0-5	Productive PFB	7,105,101.1	1,036,101.1	0	7,105,101.1
		CC0-6	Productive Invoice	387,596.9	387,596.9	0	387,596.9
		CC0-7	Productive Order	20,000,000	20,000,000	0	20,000,000
		CC0-8	Productive per h	20,000,000	20,000,000	0	20,000,000
		CC0-9	Productive Orderline	0	0	0	0



How to get the interface to work?

The interface is available for all CostPerform clients at no costs. To implement it you first need to have Qlikview up and running on your system. Then you need the script and the template .qvw file. The script may have to be altered for the right startup directory for Qlikview a/o Excel.

Contact our helpdesk for the materials and installation support.